

STATE OF FLORIDA
COUNTY OF PALM BEACH

THIS PLAT FILED FOR
RECORD AT _____ M.
THIS _____ DAY OF _____
2016, AND
DULY RECORDED IN PLAT
BOOK NO. _____ ON
PAGES _____ THROUGH

SHARON R. BOCK
CLERK AND COMPTROLLER
OF THE CIRCUIT COURT
BY _____
DEPUTY CLERK

BEARING BASE
N89°49'37"E 2707.88'(GRID)
NORTH LINE OF SEC23-TWP.44S-RGE42E
168.42' (GRID)

N 1/4 CORNER OF SEC23-TWP44S-RGE42E
FALLS IN CANAL
PBC DOC. NO. 53354 30250
N 837004.302 / E 940572.949

NE CORNER OF SEC23-TWP44S-RGE42E
FOUND PBC MONUMENT WITH BRASS DISC
PBC DOC. NO. 53355 26595 36084
N 836931.684 / E 943279.84

LINE & CURVE TABLE

L1	S89°58'00"W	5.32'
L2	N01°52'04"W	46.26'
L3	S89°59'20"E	14.13'
L4	N00°00'40"E	95.52'
L5	N08°11'55"W	57.89'
L6	N89°58'22"W	16.07'
L7	N00°02'00"W	10.00'
L8	S89°58'22"E	11.57'
L9	N00°01'38"E	11.34'
L10	N89°58'00"E	11.53'
L11	S08°11'55"E	78.33'
L12	S00°00'40"W	99.81'
C1	R=46.61' L=24.70' D=30°29'42"	
CHB=S21°50'52"W CH=24.41'		
L13	S89°58'00"W	8.22'
L14	S00°00'40"W	20.00'

FAMILY DOLLAR AT 10th AVENUE NORTH
A REPLAT OF A PORTION OF LOT 1, AND ALL OF LOTS 2, 3 AND 31, BLOCK 7, OF
GREENACRES PLAT NO. 2, RECORDED IN PLAT BOOK 13, PAGES 3-4, PALM BEACH
COUNTY, FLORIDA, TOGETHER WITH A PORTION OF TRACT 'S', AND ALL OF TRACT 'R',
AND 54, RECORDED IN PLAT BOOK 16, PAGE 4, PALM BEACH COUNTY, FLORIDA.
LYING IN SECTION 23, TOWNSHIP 44 SOUTH, RANGE 42 EAST
CITY OF GREENACRES, PALM BEACH COUNTY, FLORIDA

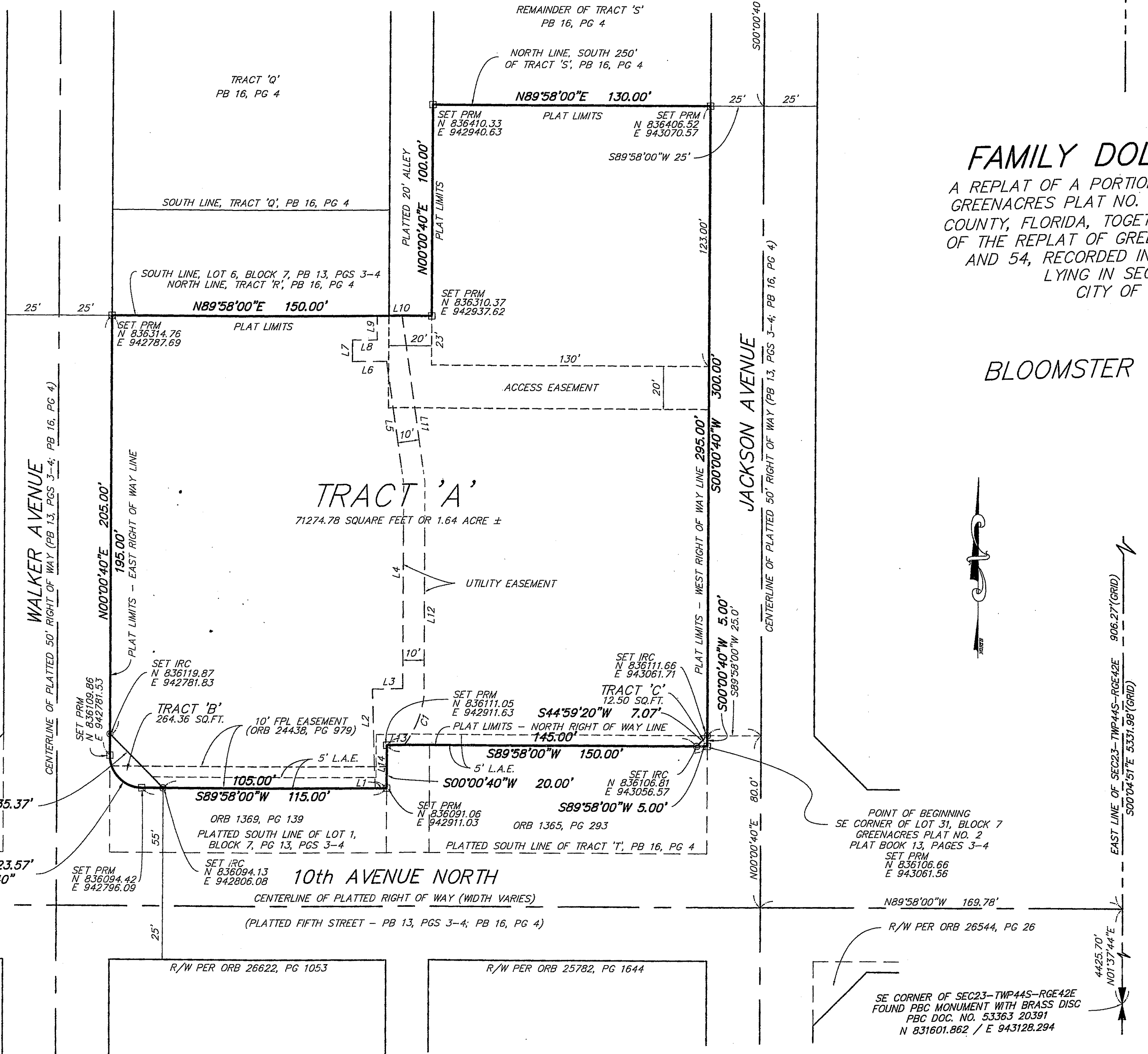
SHEET 2 OF 2

PREPARED BY

BLOOMSTER PROFESSIONAL LAND SURVEYING, INC.

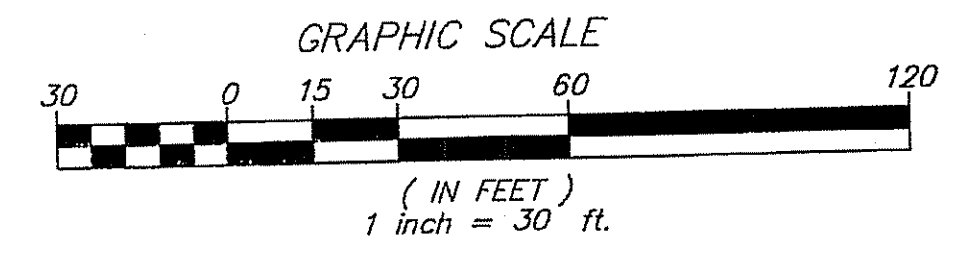
641 NORTHEAST SPENCER STREET
JENSEN BEACH, FLORIDA 34957

PHONE (772) 334-0868
FAX (772) 334-5283
BLOOMSTER@BLOOMSTERSURVEY.NET
JULY 2016



LEGEND & ABBREVIATIONS

- = SET 4"x4"x24" CONCRETE MONUMENT WITH DISC (PRM LB 6018)
- PRM = PERMANENT REFERENCE MONUMENT
- IRC = SET 5/8" IRON ROD & CAP (LB 6018)
- ORB = OFFICIAL RECORDS BOOK
- PG. = PAGE
- LB = LICENSED BUSINESS
- FDOT = FLORIDA DEPARTMENT OF TRANSPORTATION
- R/W = RIGHT OF WAY
- PB = PLAT BOOK
- PBC = PALM BEACH COUNTY
- DOC. = DOCUMENT
- FPL = FLORIDA POWER & LIGHT
- L.A.E. = LIMITED ACCESS EASEMENT
- SEC = SECTION
- TWP = TOWNSHIP
- RGE = RANGE
- R = RADIUS
- L = ARC LENGTH
- D = DELTA OR CENTRAL ANGLE
- CHB = CHORD BEARING
- CH = CHORD DISTANCE



NOTICE: THIS PLAT, AS RECORDED IN ITS GRAPHIC FORM, IS THE OFFICIAL DEPICTION OF THE SUBDIVIDED LANDS DESCRIBED HEREIN AND WILL IN NO CIRCUMSTANCES BE SUPPLANTED IN AUTHORITY BY ANY OTHER GRAPHIC OR DIGITAL FORM OF THE PLAT. THERE MAY BE ADDITIONAL RESTRICTIONS THAT ARE NOT RECORDED ON THIS PLAT THAT MAY BE FOUND IN THE PUBLIC RECORDS OF THIS COUNTY.